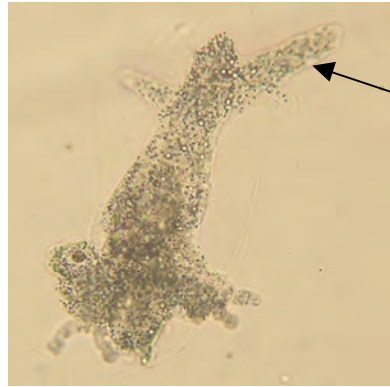


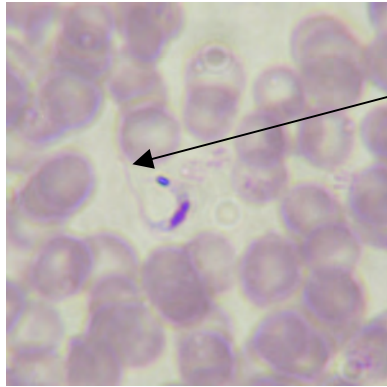
Protozoa



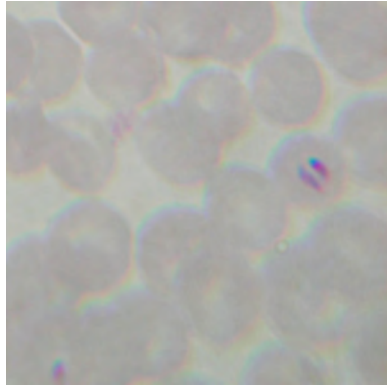
Amoeba
(Sarcodina-pseudopods)



Paramecium
(Ciliophora-cilia)



Trypanosoma
(Mastigophora-flagella)

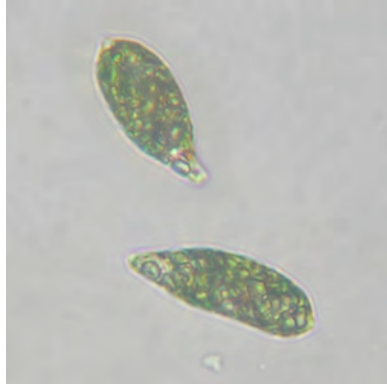


Plasmodium
(Apicomplexa-non-motile
Intracellular parasite)



Anabaena
Cyanobacteria
Prokaryote-Bacteria
(Note no organelles are
visible in prokaryotes)

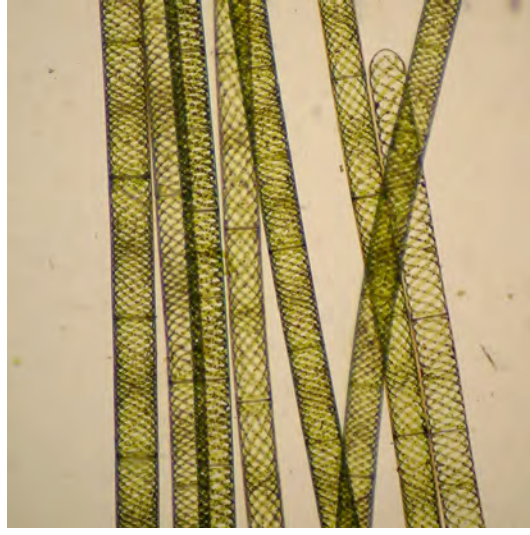
Algae



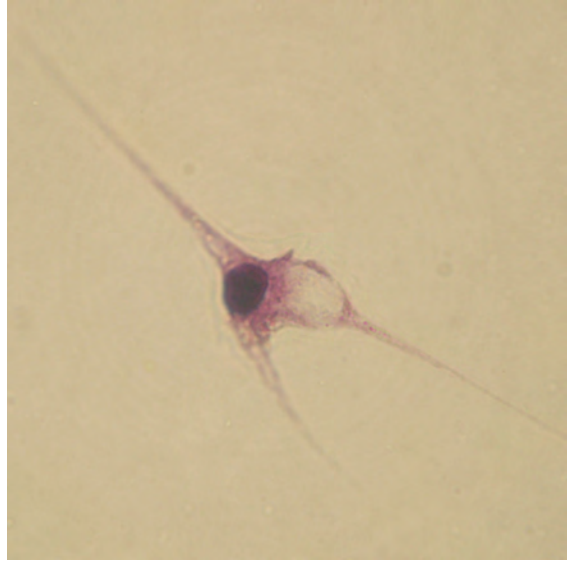
Euglena
(Euglenophycophyta)



Diatom
(Chrysophycophyta-
golden brown algae)



Spirogyra
(Chlorophycophyta-green algae)



Dinoflagellate
(Pyrrophyophyta-Fire algae)